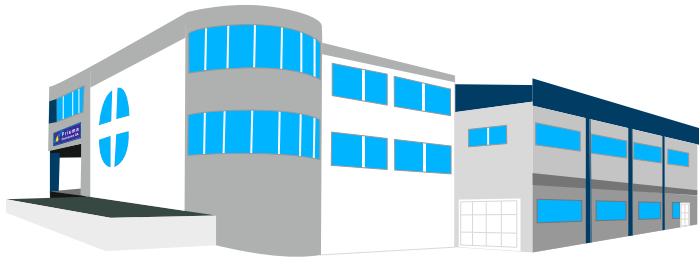


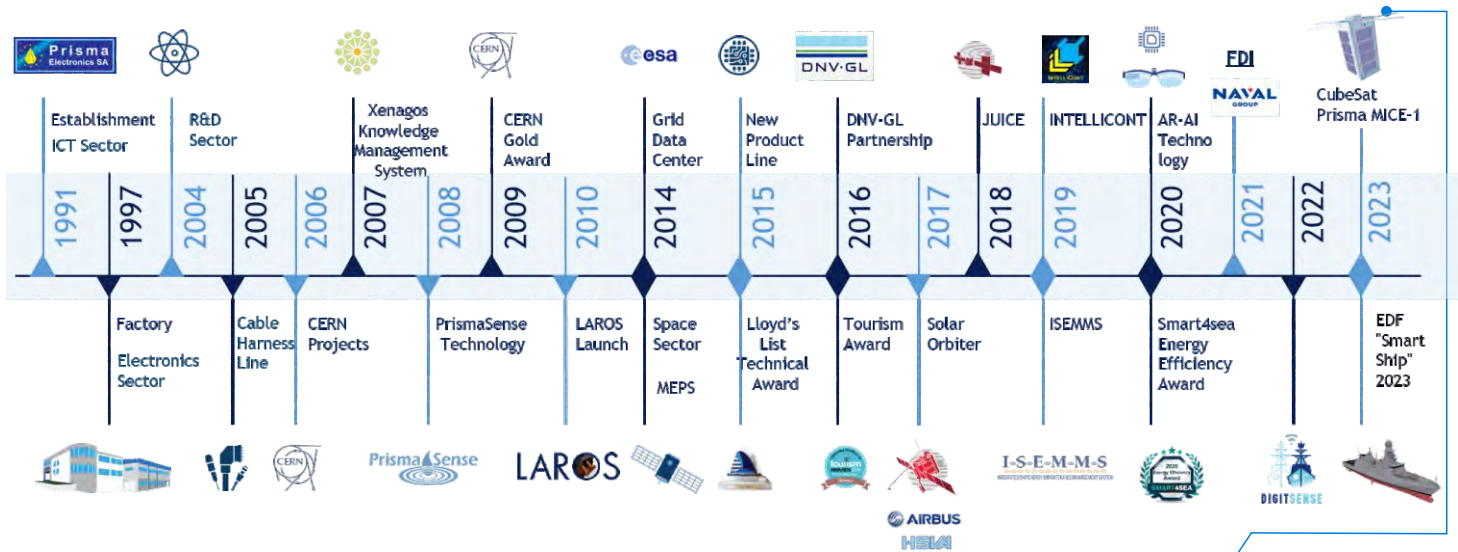
IN A NUTSHELL

Prisma Electronics SA is a leading Innovator in Electronics for Commercial, Medical, Space and Defense applications. The Company actively collaborates with ESA, AIRBUS DS, CERN, as well as with other multinational organizations.

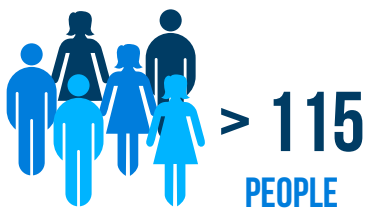


Since 1997, the Company has participated in over than 70 R&D European and National projects, developing the Corporate Technology PrismaSense, which is the basis of a series of Remote Monitoring Applications as LAROS, the awarded Maritime Solution. Today, LAROS has been successfully deployed in more than 600 vessels, worldwide.

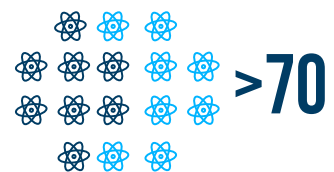
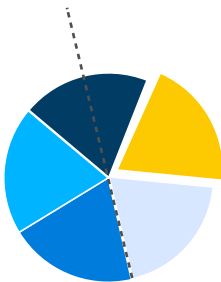
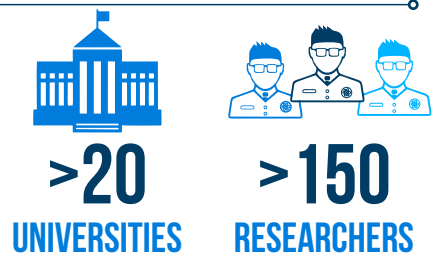
MILESTONES



IN NUMBERS



ONGOING COOPERATION



EU AND NATIONAL R&D PROJECTS

ELECTRONICS

Electronics Manufacturing Services under Strict Quality Protocols and State of the art Robotics

Surface mount technology (SMT)
with +/- 0.035mm accuracy
or/and

Conventional technology (THT)

SMD Placement:
01005 up to QFP's and BGA's

100% 3D Automated
Optical Inspection



Cables harnessing

Integrated solutions
for electronic devices

Specialized Services
*coating, climatic test chamber,
procurement of components*

IPC/ECSS Certified Personnel

SPACE

What we do

Working to launch
our own Satellite -
Design - Manufacturing -
Assembly - Integration -
Testing - Operations - SW

Of

Electronics
Cables Harness
Software on Demand
AI in Space
IoT - Space apps

For

Flight HW
EGSE
Zero Defect Manufacturing
Demanding Systems



Certified personnel on
ECSS-Q-ST-70-08, ECSS-Q-ST-70-38, ECSS-Q-ST-70-28, ECSS-Q-ST-70-26

CleanRoom ISO-7 Facilities

MARITIME LAROS

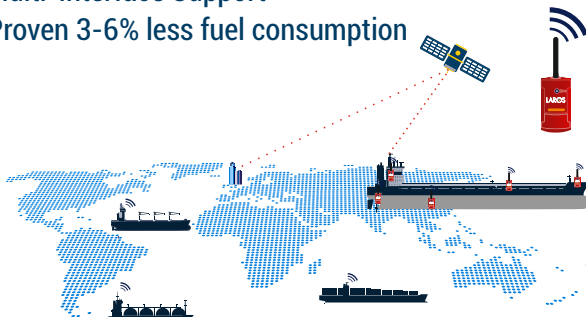


A turn-key solution for shipping digitalization

Wireless Remote Monitoring & Performance
Analysis system

Multi-Interface Support

Proven 3-6% less fuel consumption



More than 600 Installations in vessels online

R&D

Design & Development for Commercial,
Research, Defense and Space projects

Design of Electronic Circuits

Design of Electronic Devices

Design & Development of
Embedded & Application SW

Design and Testing for RF
circuits up to 60GHz

IoT - M2M - Gateways - AR - ML - AI - Data Science

Low Power Design
Monitoring CERN
RTOS IoT
ESA Autonomy PCB Design
Embedded C Zigbee

PROJECTS

ESA - SOLAR ORBITER

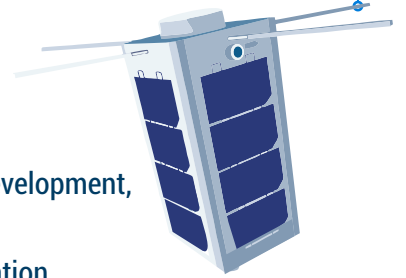
Design, Development, Manufacture, Integration, Verification and Delivery of the **Miscellaneous Electrical Ground Support Equipment**

Subcontractor of Airbus DS Ltd, UK



PRISMA MICE-1

Design, Assembly, Integration, Software Development, Testing, Launch, co-Operate a ground station, Build IoT to Space smart devices for maritime and First Responders



DEFENCE

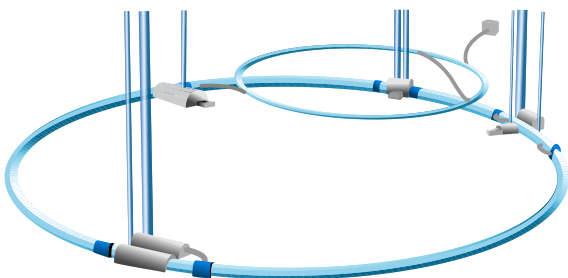
Manufacturer of electronic devices and Cables for Military Applications

Certified Company from Hellenic Ministry of Defence & be included in Registry of Manufacturers of Defence Material



CERN PROJECTS

Official Supplier of CERN



Production of boards and devices with High requirements used in demanding and hazardous environment.

Manufacture Power Converters for use in LHC. R&D Projects (FTK, EDUSAFE)



NAVAL GROUP



Official Supplier to Naval Group
Subcontractor for BELLHARA Frigates.
Cooperation under EDF for the Design of the European Patrol Corvette.



AWARDS



CERN/CMS
Gold Industry Award



Demokritos R&D Center
Distinction in R&D Cooperation



Lloyd's List
Technical Achievement Award



SMART4SEA
Energy Efficiency Award



QUALIFICATIONS



ISO 9001:2015



ISO 27001:2013



ISO 14001:2015



ECSS Trained & Certified personnel
on Electronics Soldering & Crimping of Cables



IPC Trained & Certified Personnel
on Electronics Manufacturing Services



JOB OPPORTUNITIES

ALEXANDROUPOLIS HQ - FACTORY

Sales/ Business Development Manager
Accounting Assistant
Marketing Assistant
Junior Project Manager

IT Engineer
Electrical- Electronics Engineer
Hardware Design Engineer
Embedded Software Engineer
Software Developer
AI Software Engineer
Dev Ops Engineer

Technical Support Engineer
IT & Web Support
SMT Production Operator
Test Automation Engineer
Operator for Cables
Procurement Officer

ATHENS OFFICE

Sales/ Business Development Manager
IoT Presales Engineer
Marketing Assistant
Junior Project Manager

Hardware Design Engineer
Marketing Assistant
Embedded Software Engineer
Junior Project Manager
Software Developer
AI Software Engineer
Dev Ops Engineer

Technical Support Engineer
Electrical- Electronic Engineer
Marine Data Analyst
Environmental Analyst
Mechanical Design Engineer
Space Engineer



www.prismael.com

[f /prismaelectronicssa](https://www.facebook.com/prismaelectronicssa)

[in /company/prisma-electronics-sa](https://www.linkedin.com/company/prisma-electronics-sa)

 **apply now and build your future!** ibd@prismael.com